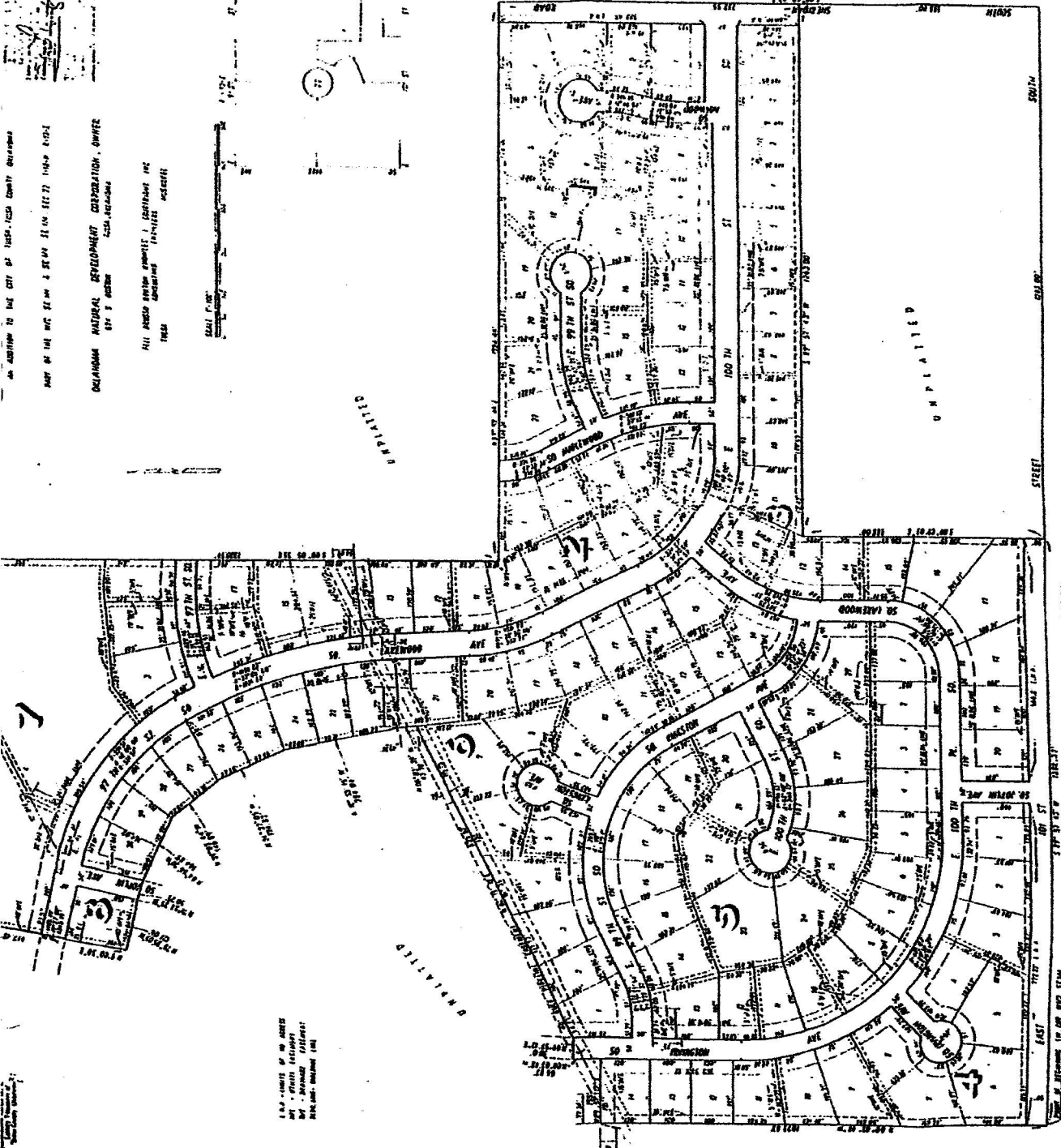


SUN
MEADOW
I

PLAT NO.
3452

AN ORDINANCE TO THE CITY OF TULSA, TULSA COUNTY, OKLAHOMA
PART OF THE MAP SHOWING A SUBDIVISION OF LAND IN THE CITY OF TULSA, TULSA COUNTY, OKLAHOMA
OKLAHOMA NATURAL DEVELOPMENT CORPORATION, OWNER
BY S. S. HAYDEN, REGISTERED SURVEYOR
ALL AREAS SHOWN ARE SUBJECT TO EASEMENTS AND RIGHTS OF WAY
AS SHOWN ON THE MAP
DATE: 11/11/11



ALL AREAS SHOWN ARE SUBJECT TO EASEMENTS AND RIGHTS OF WAY AS SHOWN ON THE MAP

UNPLATTED

UNPLATTED

UNPLATTED