

COUNTY CLERK

SUN MEADOW IV

A RESUBDIVISION OF LOT 4, BLOCK 7, SUN MEADOW AN ADDITION TO THE CITY OF TULSA, TULSA COUNTY, OKLAHOMA

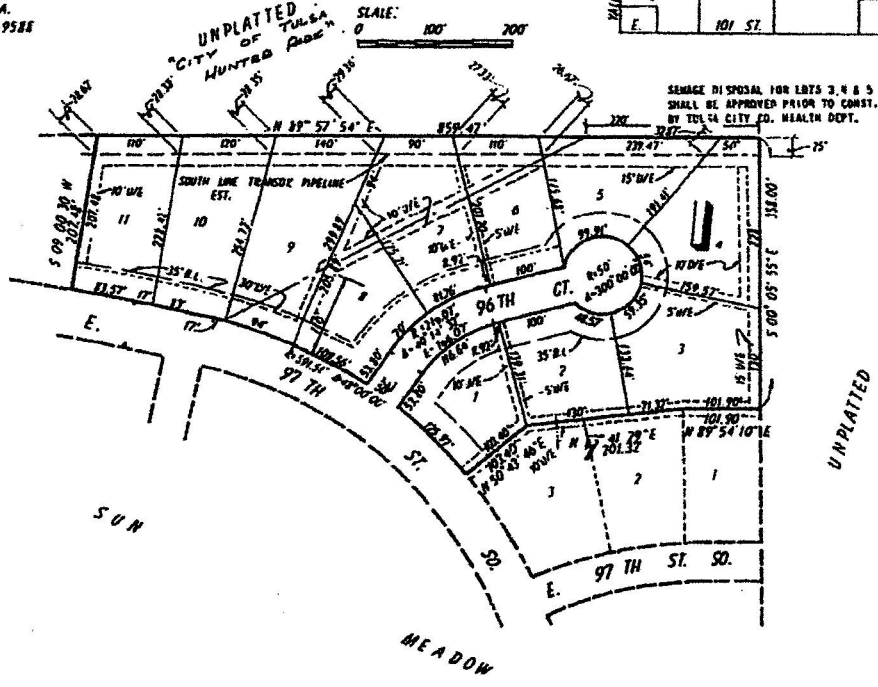
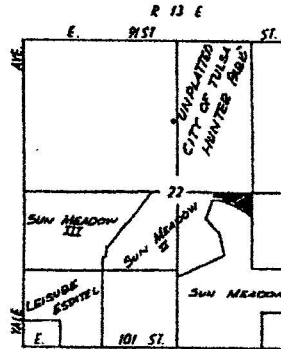
OWNER'S

ROBERT G & ANNE H. CARMACK NW/4
3337 S MADISON AVE.
TULSA, OKLA.
PHONE: 747-7758

6.7 ACRES

ENGINEER

W. BRUSSO DESIGN ENGINEERS INC.,
6311 E TROMBEN
TULSA, OKLA.
TEL. 918-835-9588



SEWAGE DISPOSAL FOR LOTS 3, 4 & 5 SHALL BE APPROVED PRIOR TO CONSTRUCTION BY TULSA CITY ED. HEALTH DEPT.

FINAL PLAT

CERTIFICATE OF APPROVAL
I hereby certify that this plat was approved by the Tulsa Metropolitan Planning Commission on FEB 1 1978

W. BRUSSO DESIGN ENGINEERS INC.
This appeared in view of this plat to and filed in the office of the County Clerk on FEB 1 1978
W. Brusso
COUNTY CITY ENGINEER

CERTIFICATE

As provided by Title 11, Chapter 10, Section 10-101 of the Oklahoma Statutes, the County Clerk has reviewed this plat and the plat, all such laws have been complied with and the plat is hereby approved and recorded in the office of the County Clerk on FEB 1 1978 at 8:15 o'clock PM of the month of FEBRUARY in the year of our Lord one thousand nine hundred and seventy eight and of the Independence of the United States of America the thirty eighth.

RECEIVED
FEB 14 1978
TULSA METRO AREA
PLANNING COM.

John K. ...
COUNTY CLERK