

PL# 5805

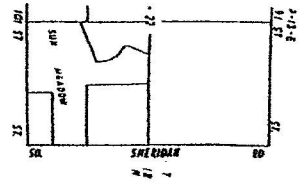
# MEADOW II

IN THE CITY OF WESLA, WUSA COUNTY OKLAHOMA

N/2 SW/4 & W/2 SE/4, SEC. 22, T.8N. R.12E

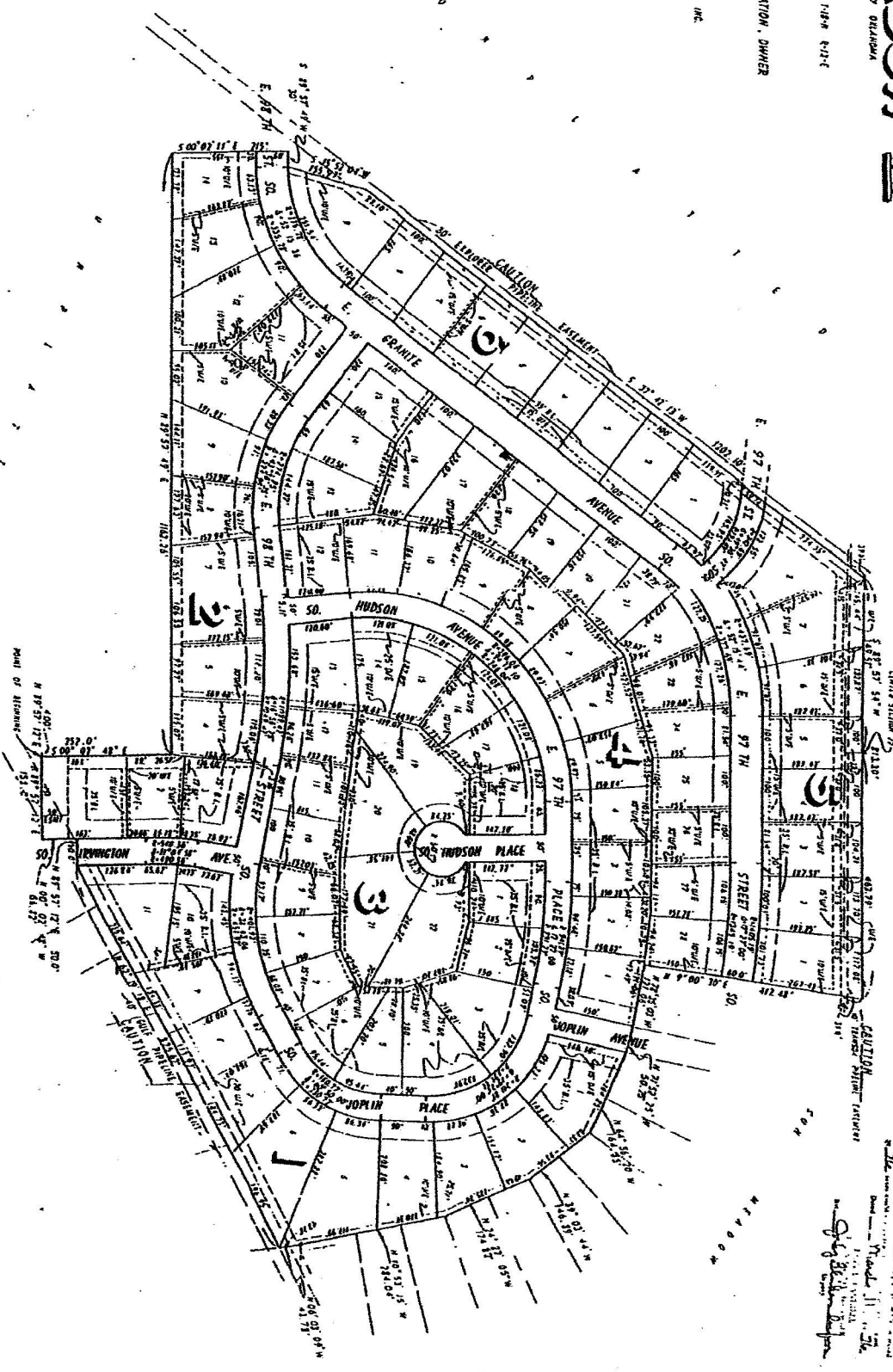
NATURAL DEVELOPMENT CORPORATION, OWNER  
424 S. BOSTON WESLA, OKLAHOMA

DESIGNED BY  
WESCO DESIGN GROUP & CONSULTANTS, INC.  
4211 E. TULSAWEN  
TULSA, OKLAHOMA



*James Thompson*  
OWNER

UNPLATTED



APPROVED FOR THE CITY OF WESLA, OKLAHOMA  
 Mayor: *James Thompson*  
 City Clerk: *James Thompson*

DATE

MEADOW