

3700
3710

330000

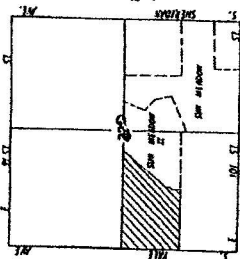
FINAL PLAT

CERTIFICATE OF APPROVAL
This plat has been approved for recording by the Tulsa County Clerk, Oklahoma, under the authority of the Oklahoma Statutes, Title 101, Sections 1-10, and Title 102, Section 1-10.

APPROVED FOR RECORDING
TULSA COUNTY CLERK
TULSA, OKLAHOMA

RECORDED
MAY 10 1957

COMPLETION INDEXED



1/2 SECTION 30
TULSA, OKLAHOMA

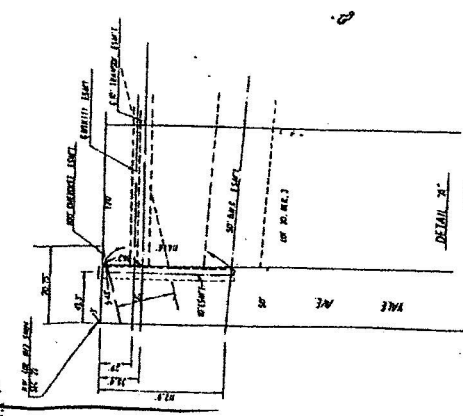
SUN MEADOW III

PART OF THE W/2 SW/4 SEC. 30 T14N-R4E

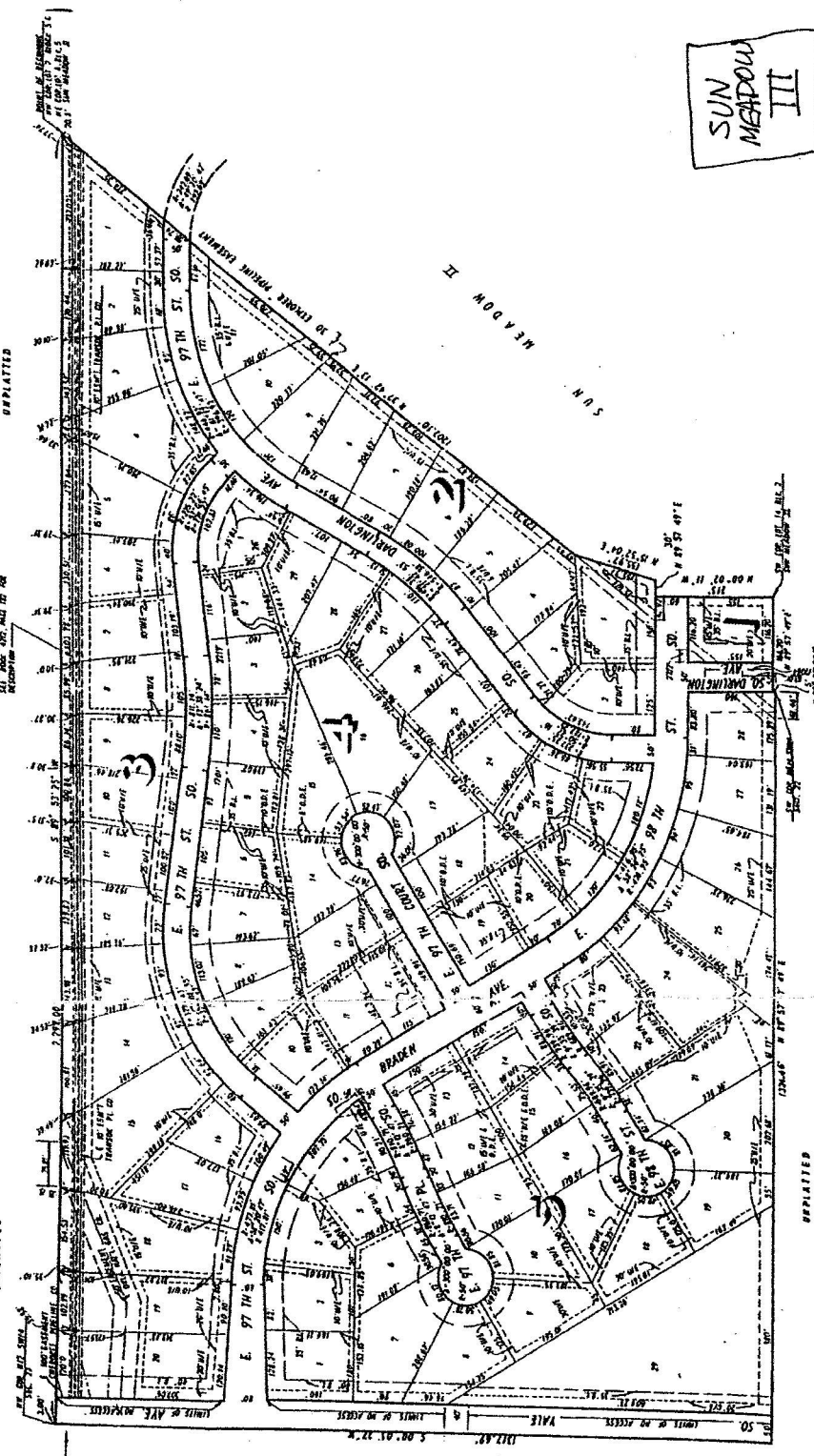
OKLAHOMA NATURAL DEVELOPMENT CORPORATION, OWNER
624 S. BOSTON TULSA, OKLAHOMA
TEL. (918) 543-5411

FELL PROCD. INSTRUMENTS, INC.
CITY OF TULSA, OKLAHOMA
TEL. (918) 535-9668

RECEIVED
MAY 10 1957
TULSA METRO AREA
PLANNING COM. OFFICE



LESSOR:
OKLAHOMA NATURAL DEVELOPMENT CORPORATION
SEE RESTRICTIVE COVENANT, P. 2



CERTIFICATE
As provided in Title 101, Section 10, and Title 102, Section 1-10, of the Oklahoma Statutes, this plat has been approved for recording by the Tulsa County Clerk, Oklahoma, under the authority of the Oklahoma Statutes, Title 101, Sections 1-10, and Title 102, Section 1-10.

SUN MEADOW III